



Winterburn Truss

ROOF AND FLOOR SYSTEMS

— *SINCE 1980* —





Since 1980, Winterburn Truss* has been dedicated to providing premium structural building components to residential, commercial, industrial and agricultural markets. Winterburn Truss is a leader in the design, manufacture and distribution of:

- ✔ **ROOF TRUSSES**
- ✔ **OPEN WEB FLOOR JOISTS**
- ✔ **WALL PANELS**
- ✔ **LAMINATED STRUCTURAL POSTS**

We have the capacity to manufacture roof trusses up to 14' tall and 110' wide open web floors from 24" deep to 40' long.

FOR ORDER INQUIRIES OR MORE INFORMATION CONTACT

MIKE PACEY

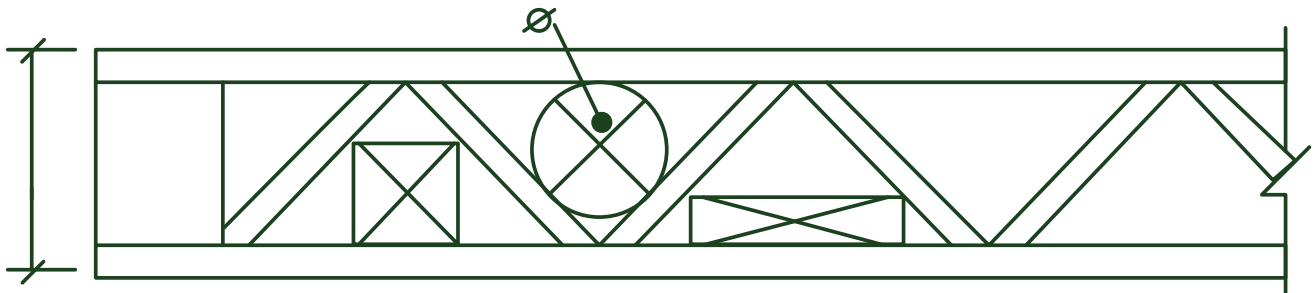
NORTHERN ALBERTA SALES MANAGER
MJPACEY@WINTERBURNTRUSS.CA | (780) 915 - 6310

*A DIVISION OF NELSON LUMBER



FLOOR TRUSS

OPEN WEB FLOOR SYSTEM(WOOD)



Plumbing, electrical and HVAC systems can be installed around and through open web area of the floor trusses.



We can also design and manufacture floors utilizing the MiTek Canada 'Posi-Strut.'



- Open web design permits plumbing, heating and electrical to be installed quick and efficiently.
- Long spans allow the ability to create wide open spaces without a post dictating room layout.
- Floor system are designed by experienced competent and conscientious technical designers.



WE DESIGN & MANUFACTURE

CUSTOM ROOF TRUSSES
Delivered To Site

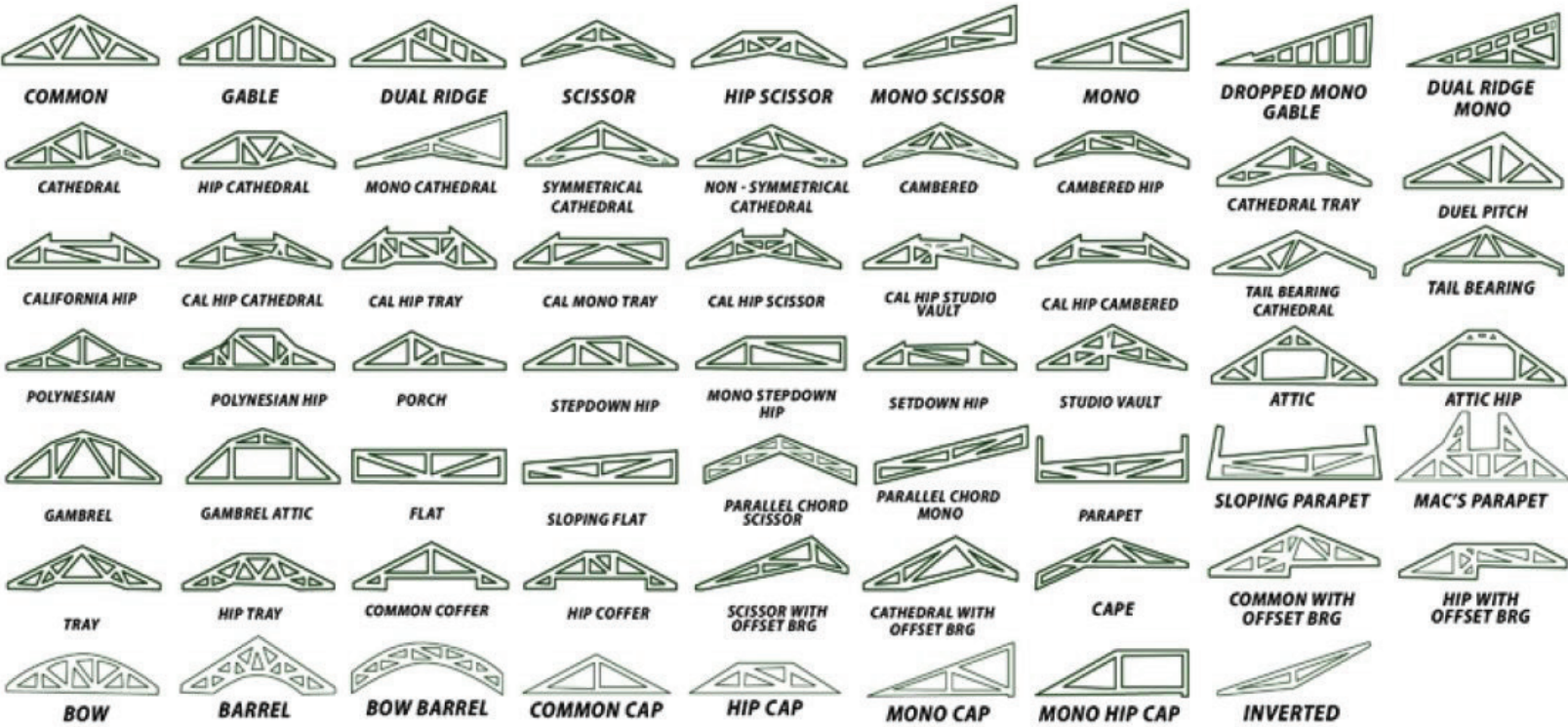
CUSTOM FLOOR TRUSSES
Delivered To Site

Let our experienced technical designers assist you with your residential, commercial, and agricultural roof requirements.

BASIC WEB CONFIGURATIONS



TRUSS TYPES



**53027 HIGHWAY 60
ACHESON, AB
T7XD 5A4**