

\*A DIVISION OF NELSON LUMBER\*



**Winterburn Truss**

***ROOF AND FLOOR SYSTEMS***

***SINCE 1980***







**Winterburn Truss**



**Since 1980**, Winterburn Truss\* has been dedicated to providing premium structural building components to residential, commercial and agricultural markets. Winterburn Truss is a leader in the design, manufacture and distribution of:

○ **ROOF AND FLOOR TRUSSES**

○ **I-JOISTS**

○ **LAMINATED VENEER LUMBER (LVL)**

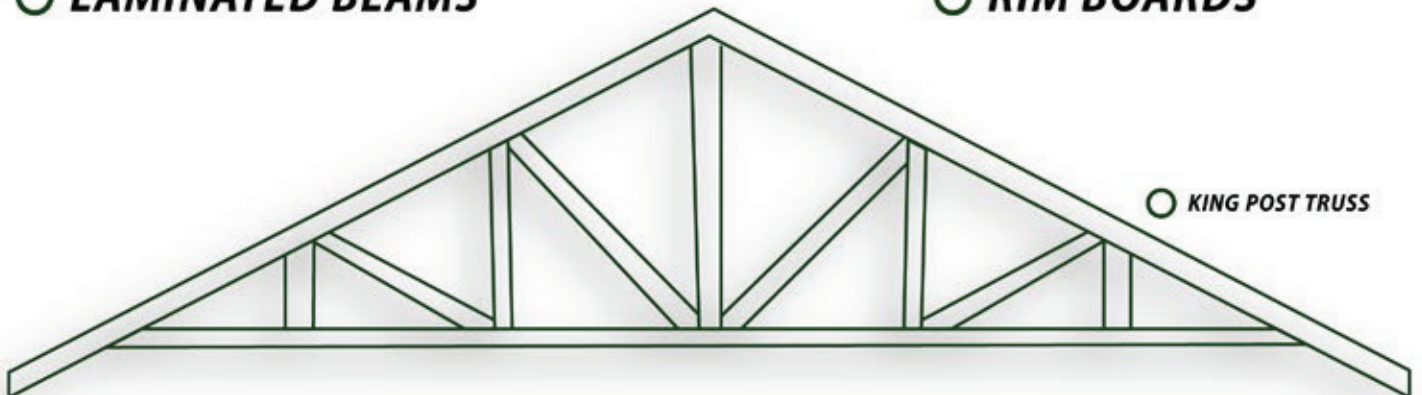
○ **LAMINATED BEAMS**

○ **WEST - IAM**

○ **STEEL POSTS**

○ **LVL BEAMS**

○ **RIM BOARDS**



○ **KING POST TRUSS**





Winterburn Truss

# **STOCKING**

## ***PROGRAM***







# STOCKING PROGRAM



## ○ **ROOF TRUSS**

- 4/12 Pitch
- 24" O.C. Residential
- 48" O.C. Farm
- 48" O.C. Commercial

## ○ **FLOOR TRUSS**

- Open web trimable ends
- 14" Depth
- 6'-22' Lengths (1 foot increments)

## ○ **PONY WALL**

- 11 7/8" Depth, 14" also available
- 12' Lengths

## ○ **SHED FRAMES**

- 8' and 10' Widths





Winterburn Truss

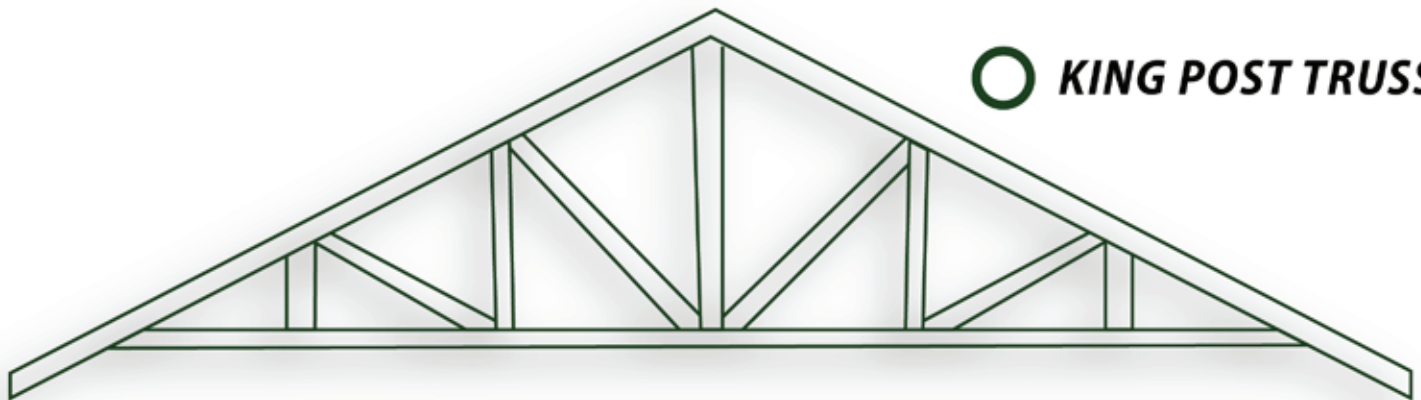
# COMMON TRUSS CONFIGURATIONS





# COMMON TRUSS CONFIGURATIONS

There are various configurations of roof trusses.  
These are some typical types.



○ **KING POST TRUSS**



○ **FINK TRUSS**



○ **HOWE TRUSS**



○ **SCISSORS TRUSS**



○ **ATTIC TRUSS**





Winterburn Truss

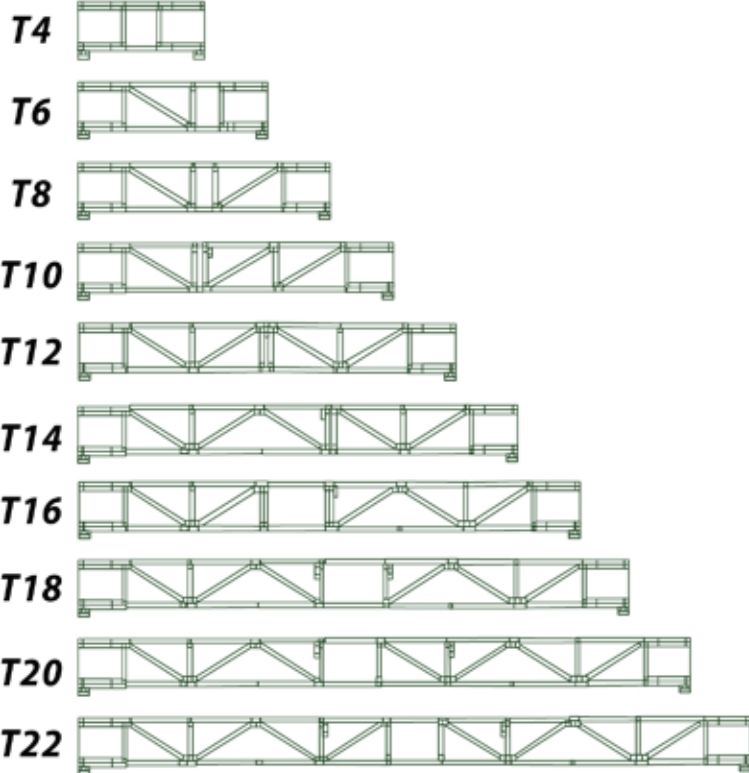
# TRIM END

## *FLOOR TRUSS*





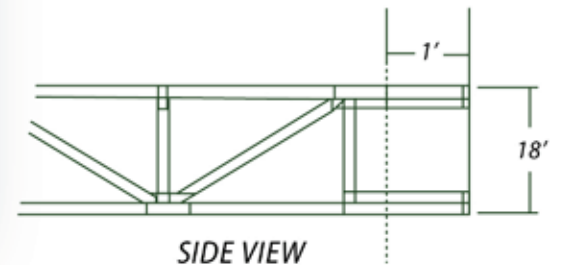
# TRIM END FLOOR TRUSS



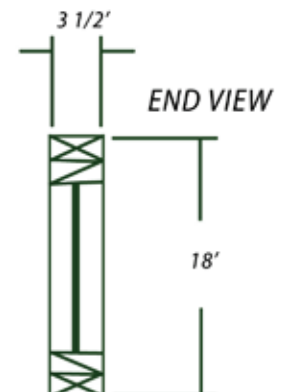
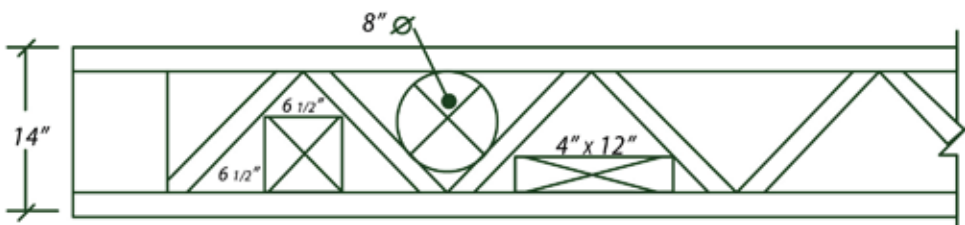
## DESIGN CRITERIA

RESIDENTIAL:		COMMERCIAL:	
LIVE LOAD	40PSF	LIVE LOAD	40PSF
DEAD LOAD	15PSF	DEAD LOAD	15PSF
DEFLECTION	L/480	DEFLECTION	L/480

Also available in: T5, T7, T9, T11 & T13



## MECHANICAL SYSTEM INSULATION



Plumbing, electrical and HVAC systems can be installed around and through open web area of the floor trusses as long as the truss chords and webs are not cut, notched or altered.





# TRIM END

## 4 X 2 FLOOR TRUSS

RESIDENTIAL AND COMMERCIAL APPLICATIONS

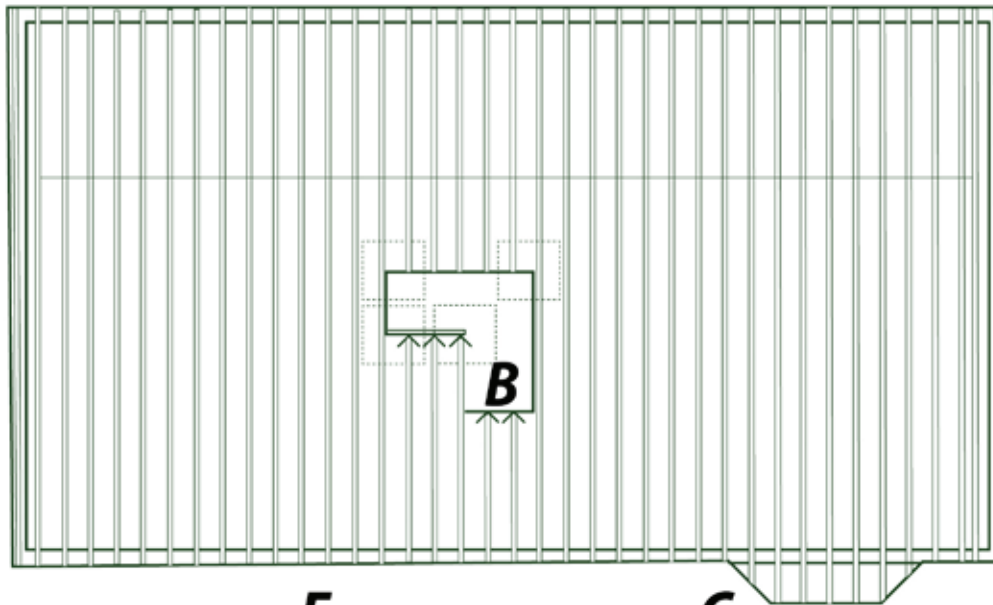
1 - 1/8" OSB RIMJOIST

**A**

FLOOR TRUSSES AT  
16" UNLESS NOTES OTHERWISE

18" PONYWALL

**D**

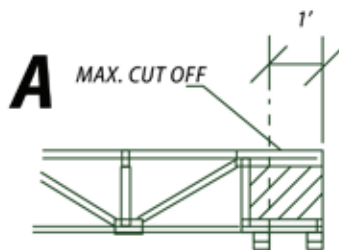


18" PONYWALL

**E**

1 - 1/8" OSB RIMJOIST

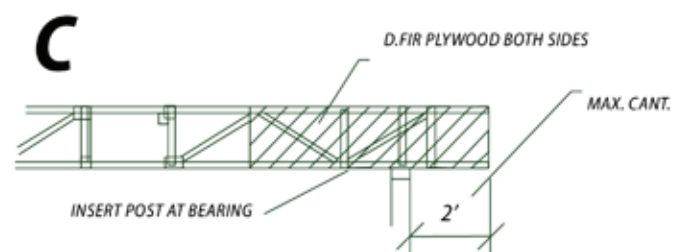
**C**



TRIM END DETAIL



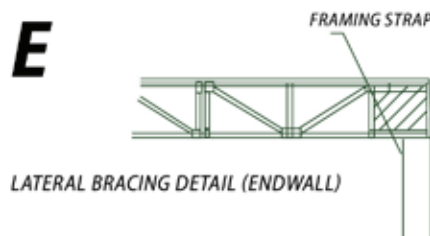
HANGER DETAIL



END TO END DETAIL



LATERAL BRACING DETAIL (SIDEWALL)



LATERAL BRACING DETAIL (ENDWALL)

- Open web design permits plumbing, heating and electrical to be installed quick and efficiently.
- Long spans allow the ability to create wide open spaces without post dictating room layout.
- Stock product allows for shorter lead times when the building season is at it's busiest.

- The Trim End 4x2 floor truss is designed with 12" trimmable ends allowing versatility on the job site if needed due to site changes.
- Floor system are designed by competent and conscientious technical designers.
- Every floor system has specifically designed layouts.



Winterburn Truss

# NON-STOCK *TRUSS*







Winterburn Truss

# NON-STOCKING PROGRAM

## ○ **ROOF TRUSS**

- Custom designed
- Engineered for geographic snow load
- Design service for permits

## ○ **FLOOR TRUSS**

- Custom Layout
- Open Web or I-Truss

Note: All custom work requires appropriate drawings or blueprints.







Winterburn Truss

# NON-STOCKING PROGRAM

## MITEK 20/20 TRUSS SHAPES

### BASIC WEB CONFIGURATIONS



KINGPOST



SIMPLE FINK



QUEEN



FINK



HOWE



FAN



MODIFIED QUEEN



DOUBLE FINK



DOUBLE HOWE

### TRUSS TYPES



COMMON



GABLE



DUAL RIDGE



SCISSOR



HIP SCISSOR



MONO SCISSOR



MONO



DROPPED MONO  
GABLE



DUAL RIDGE  
MONO



CATHEDRAL



HIP CATHEDRAL



MONO CATHEDRAL



SYMMETRICAL  
CATHEDRAL



NON-SYMMETRICAL  
CATHEDRAL



CAMBERED



CAMBERED HIP



CATHEDRAL TRAY



DUAL PITCH



CALIFORNIA HIP



CAL HIP CATHEDRAL



CAL HIP TRAY



CAL MONO TRAY



CAL HIP SCISSOR



CAL HIP STUDIO  
VAULT



CAL HIP CAMBERED



TAIL BEARING  
CATHEDRAL



TAIL BEARING



POLYNESIAN



POLYNESIAN HIP



PORCH



STEPDOWN HIP



MONO STEPDOWN  
HIP



SETDOWN HIP



STUDIO VAULT



ATTIC



ATTIC HIP



GAMBREL



GAMBREL ATTIC



FLAT



SLOPING FLAT



PARALLEL CHORD  
SCISSOR



PARALLEL CHORD  
MONO



PARAPET



SLOPING PARAPET



MAC'S PARAPET



TRAY



HIP TRAY



COMMON COFFER



HIP COFFER



SCISSOR WITH  
OFFSET BRG



CATHEDRAL WITH  
OFFSET BRG



CAPE



COMMON WITH  
OFFSET BRG



HIP WITH  
OFFSET BRG



BOW



BARREL



BOW BARREL



COMMON CAP



HIP CAP



MONO CAP



MONO HIP CAP



INVERTED





**Winterburn Truss**

**53027 HIGHWAY 60  
ACHESON, AB / T7X 5A4**



**\*A DIVISION OF NELSON LUMBER\***

1895 E03-E05-B14  
1895 E03-E05-E07-B14





**Winterburn Truss**

53027 HIGHWAY 60  
ACHESON, AB  
T7X0 5A4