

Edmonton

-

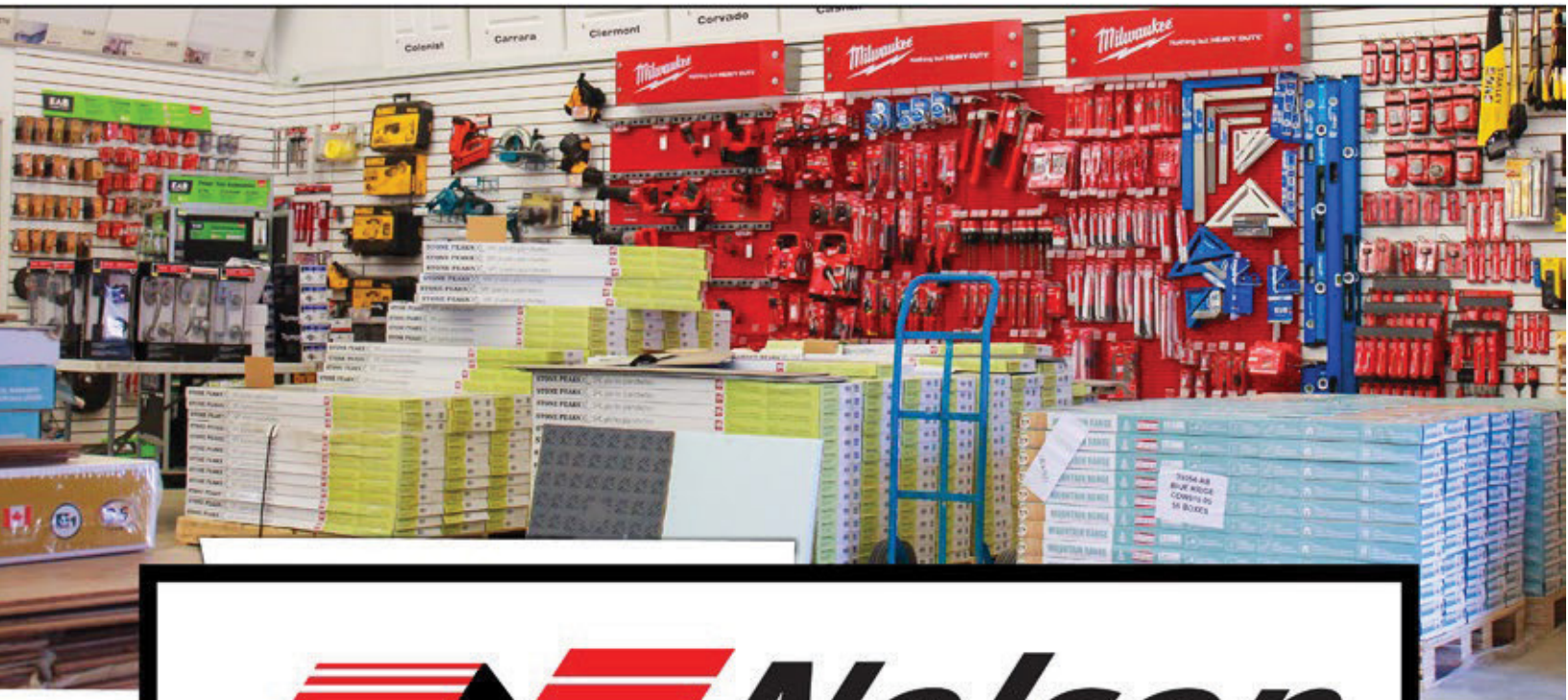
Grande Prairie

-

Slave Lake

-

Lloydminster



**TRUSTED QUALITY AND SERVICE
SINCE 1949**



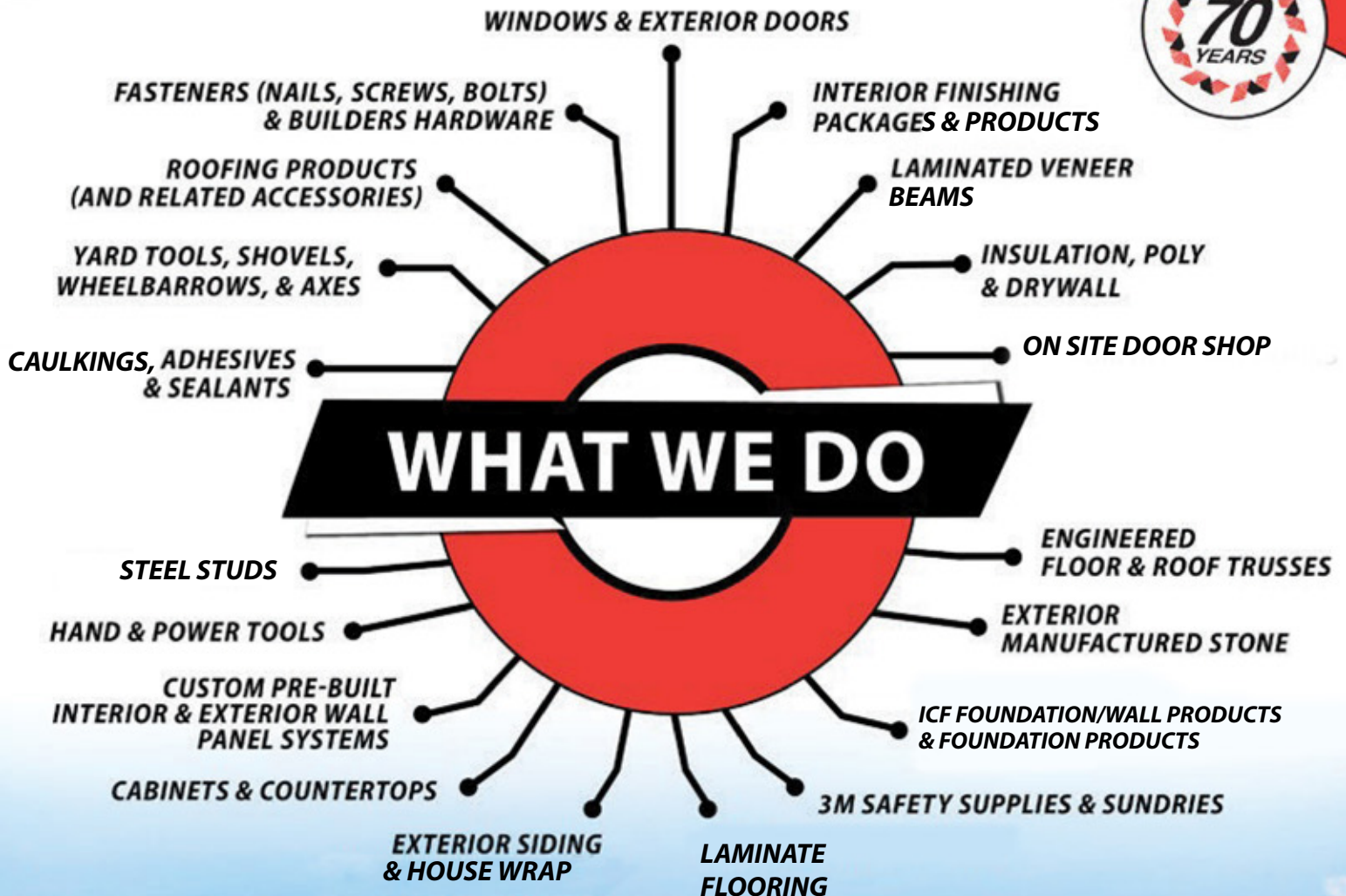
WWW.NLC.CA

WHO WE ARE

For over 70-years, Nelson Lumber has been a leading supplier of building materials for:

RESIDENTIAL, COMMERCIAL, INDUSTRIAL, AND AGRICULTURAL

applications across Western Canada.



PARTNERS IN SUPPLY

**YOU'RE ONLY AS GOOD
AS THE PRODUCTS YOU USE -**
and the people you deal with - and
we only deal with the best.

**AND
MORE!**

WWW.NLC.CA

FOUNDATIONS & WALLS



HOUSE WRAP



INSULATION



STEEL



SIDING



SHINGLES



DRYWALL & ACCESSORIES



LOCKSET AND HANDLES



MOULDINGS



POWER TOOLS & BLADES



CAULKING, SEALANTS & ADHESIVES



DOORS & WINDOWS



FASTENERS



CABINETS & COUNTERTOPS



ENGINEERED WOOD, TRUSS PRODUCT & CONNECTORS



DECKING & RAILING



LUMBER & PLYWOOD



DRYWALL

When you design a space every element contributes to the performance— even the drywall. Whether it's creating healthier spaces with walls that clean the air, more restful spaces with walls that control sound, or spaces where durable walls can handle anything, we know walls matter. Nelson Lumber supplies innovative drywall solutions that enhance occupant comfort and create better environments for healthy living.

250,000 SQ.FT.
**OF DRYWALL DELIVERED
ACROSS ALBERTA EVERY YEAR**

1. **FAST DELIVERY**
2. **COMPETITIVE PRICING**
3. **QUALITY PRODUCTS**

STEEL

Nelson Lumber offers both residential and commercial steel solutions. Supplying various steel products that include: studs, beams, and structural steel components. This diverse product mix allows for any residential and commercial framing projects.

- **RESIDENTIAL STEEL**

Light gauge 18mm - 33mm materials designed to build interior walls.

- **COMMERCIAL STEEL**

Structural 33mm - 97mm with engive 58, designed for exterior walls.

INSULATION

Nelson Lumber supplies industry leading insulation products for both residential and commercial insulation solutions. Ranging from attics, floors, and walls, our insulation products conserve energy and improve acoustics, fire resistance, and air quality in the spaces where people live, work, and play.

ONE STOP SHOP INCREASING OVERALL PROJECT EFFICIENCY

The Nelson system of pre-planning virtually eliminates costly and time-consuming construction errors and material shortages or overages.

CEILINGS

Nelson Lumber supplies Armstrong commercial & residential ceiling products. From ceiling products that include mineral fibre/fibreglass, felt, wood, metal, and more, to a variety of exposed and concealed ceiling grid systems.

Nelson Lumber provides top-quality Armstrong Ceiling products for all projects ranging from rec-rooms to hotels, restaurants to office towers, studios.....any place where form meets function.

Please speak to one of our in-house experts to help create the layouts and the budget that works best for your project. Big or Small.

WHY CHOOSE US

Serving all of **Alberta**
.....and beyond!



Residential - Commercial - Agricultural

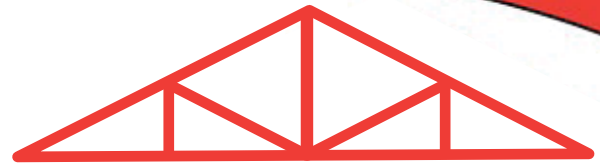
1 Nelson Lumber affiliate, Winterburn Truss, allows us to deliver premium structure building components.

2 Winterburn Truss uses only top grade, canadian, kiln-dried lumber, selected directly from lumber mills.

3 At every turn, Winterburn Truss employs the latest technology to ensure our pre-manufactured componets meet your needs and all building code requirements.

ONE STOP SHOP

**INCREASING OVERALL
PROJECT EFFICIENCY**



ROOF TRUSS

 OPEN WEB FLOOR TRUSS 

MANUFACTURING



INTERIOR FINISHING



INDUSTRY LEADING
SUPPLIERS



ON SITE
DOOR SHOP



RESIDENTIAL & COMMERCIAL
PROJECTS

WE SUPPLY:

- DOORS (WOOD & METAL)
- CABINETS
- LOCKSETS & HANDLES
- MOULDINGS, CASINGS & BASEBOARDS
- BATHROOM ACCESSORIES

WE CREATE:

- OVER 125 BUILT PER DAY
- PREHUNG & KNOCK-DOWN UNITS
- 6/8 & 8/0 DOOR HEIGHTS
- SPECIALIZE IN MULTI-UNIT RESIDENCES
- CUSTOM SIZES

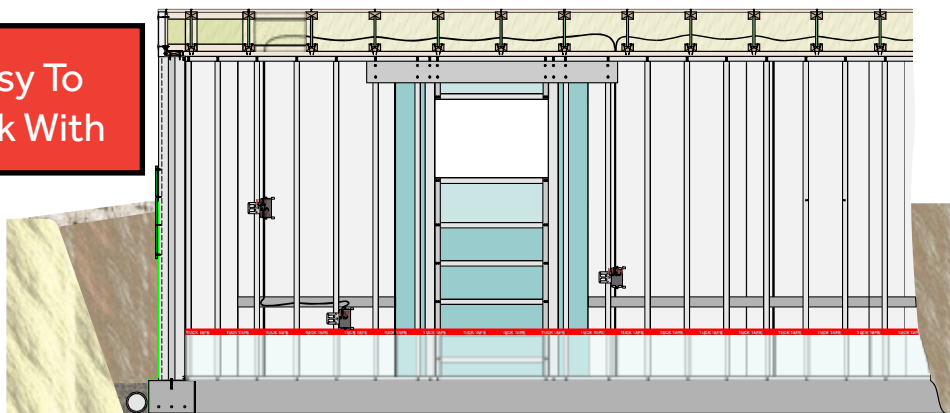


Residential - Commercial - Industrial

Overview

For a superior alternative to the poor performance of cribbed concrete without the high cost and effort of ICF basements. Polycore Foundations combine the high insulation of EPS and the strength of steel to create a quality foundation wall system. Polycore Foundations are individually engineered for each project.

Easy To
Work With



100% Concrete Free Wall Systems

- No cranes or special installation equipment
- Ready to install
- Fully insulated (R28+)
- Pre-cut electrical channels and drops
- Straight and true for quality finishing

Polycore Foundation System

Fully Insulated. Fully Structural. Concrete Free.



Quality and Excellence, From Start to Finish.

Polycore Systems are designed in house, engineered and certified by licensed professionals, then manufactured by skilled people at established facilities to meet all required specifications and tolerances. Whether installed by experienced trades or self-builders, we provide the support and followup to meet the level needed by our clients.

Nelson Lumber deals directly with the original developer of both the system and the process, offering more insight and experience with their eighteen year track record than any other dealer.

The No-Concrete Rfloor System

Fully Insulated. Fully Structural. Concrete Free.

Installation

R18+ Insulation Value

Step 1

Lay poly vapour barrier over sand base

Step 2

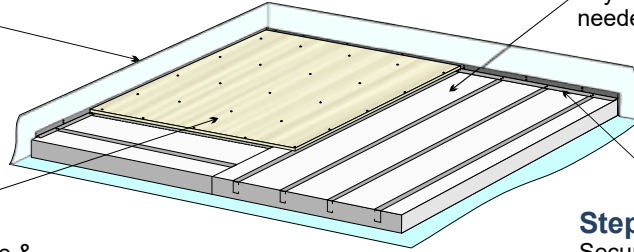
Lay floor panels, cut as needed

Step 3

Secure perimeter with angle bracket

Step 4

Finish by laying Tongue & Groove plywood or OSB



Any Way You Want

Rfloor can be finished without limitations.

Use tile, hardwood, carpet, or laminate. A modern finished recreational or living space with function and comfort.

Rfloor Universal 550: Radon mitigation with no washed rock layer!

Enviro-Smart, From Start to Finish

Our supplier, S I Construction Systems Ltd, is an environmentally responsible company sharing our commitment for designing energy efficient systems for construction. Their people and products are smart choices for those considering their personal impact on the environment from both current and future actions. Join us to support better products and better companies, to make a better world for future generations.

Polycore Foundation System Advantages

Experience Comfort:

Designed structure combined with superior insulation eliminates "cold & clammy" basement syndrome within reduced wall thickness for added room and value. Enjoy all of your home - All Year.

Energy Savings:

Polycore structural foundation walls are insulated with EPS, an industry leading best cost per R-Value product used in commercial and high end residential construction projects. Take a load off your wallet.

Not an Alternative, a Solution:

The strength and durability of steel coupled with the insulation value and physical properties of EPS provides a long term and durable solution for residential foundations. Long life and exceptional value.

Do-it-yourself:

Build to the highest possible standard, YOUR OWN. Our foundation walls are easily assembled with no skilled labor or special tools required to install. Designed sections eliminate most cutting and trimming.

Let's Get Started!

12727 St. Albert Trail Edmonton, Alberta T5L 4H5 | (780) 452-9151

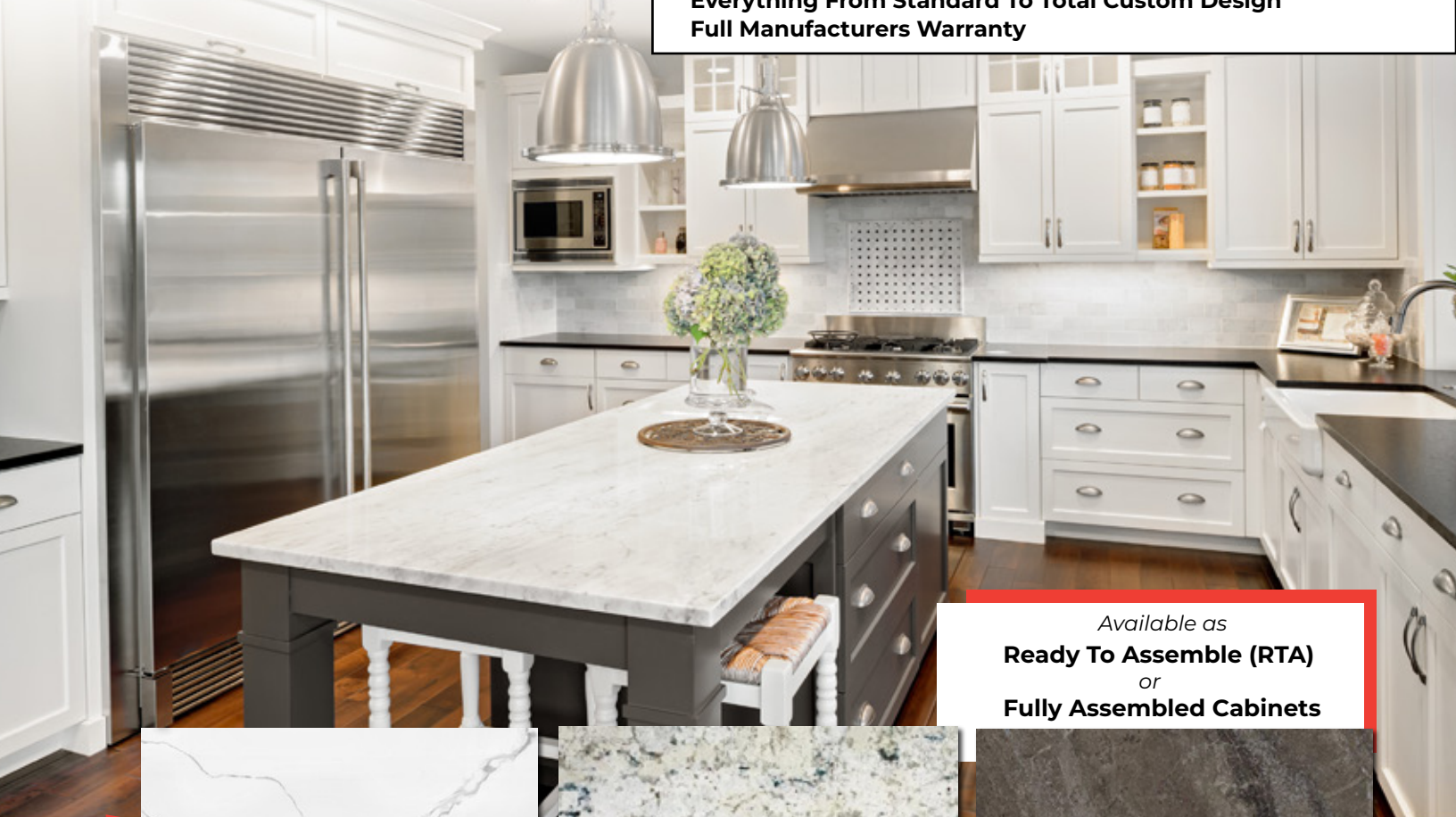




KITCHEN & BATHROOM *Cabinetry*

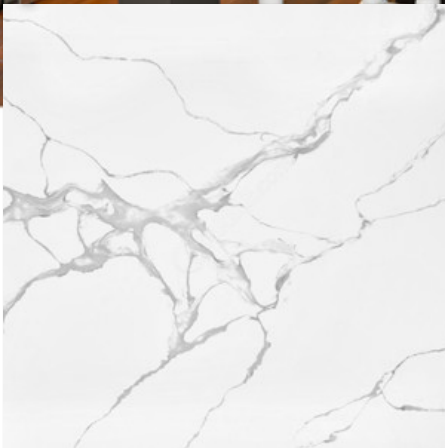
Manufactured In Canada

European Style Cabinets
Everything From Standard To Total Custom Design
Full Manufacturers Warranty



Available as
Ready To Assemble (RTA)
or
Fully Assembled Cabinets

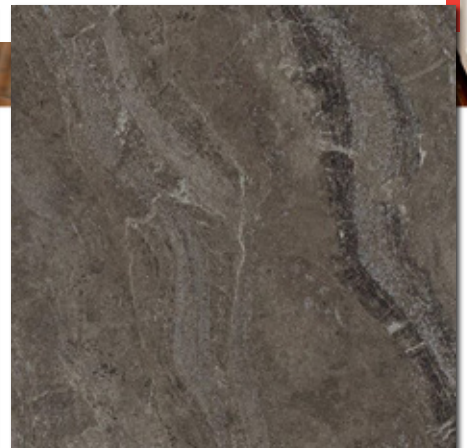
COUNTERTOP
Materials Offered



QUARTZ



GRANITE



LAMINATE

Nelson Lumber will provide you with cabinet solutions for your:

● HOME OFFICE ● LAUNDRY ● BASEMENT BAR ● CLOSETS



Multiple styles available that meet any design and budget!

Large Offering of Door Styles & Finishes

- WOOD ● PAINTED ● THERMOFOIL ● LAMINATE ● MELAMINE
- DECORATIVE HARDWARE ● CABINET ACCESSORIES



- Expert Support & Design
- Direct Delivery

INDUSTRY LEADING SUPPLIERS

Installation Available
or Supply Only



WHERE WE ARE LOCATED

FOUND ACROSS ALBERTA
to serve you better.

NELSON LUMBER - EDMONTON

12727 ST. ALBERT TRAIL

PHONE: (780) 452 - 9151

TOLL FREE : 1 (800) 738 - 8874

NELSON LUMBER - GRANDE PRAIRIE

15603 - 94 STREET

PHONE: (780) 532 - 5454

TOLL FREE : 1 (800) 738 - 8874

NELSON LUMBER - SLAVE LAKE

101 BIRCH ROAD N.E

PHONE: (780) 849 - 9663

NELSON LUMBER - LLOYDMINSTER

6609 - 44 STREET, HWY 16 W

PHONE: (780) 871- 6300

TOLL FREE : 1 (800) 661 - 6526

