



**Winterburn Truss**

***ROOF AND FLOOR SYSTEMS***

***SINCE 1980***





**Since 1980**, Winterburn Truss\* has been dedicated to providing premium structural building components to residential, commercial, industrial and agricultural markets. Winterburn Truss is a leader in the design, manufacture and distribution of:

✓ **ROOF TRUSSES**

✓ **OPEN WEB FLOOR JOISTS**

We have the capacity to manufacture roof trusses up to 14' tall and 120' wide and open web floors from 24" deep to 40' long.

FOR ORDER INQUIRIES OR MORE INFORMATION CONTACT

**MIKE PACEY**

NORTHERN ALBERTA SALES MANAGER  
MJPACEY@WINTERBURNTRUSS.CA | (780) 915 - 6310

\*A DIVISION OF NELSON LUMBER



# WE DESIGN & MANUFACTURE

**CUSTOM ROOF TRUSSES**  
*Delivered To Site*

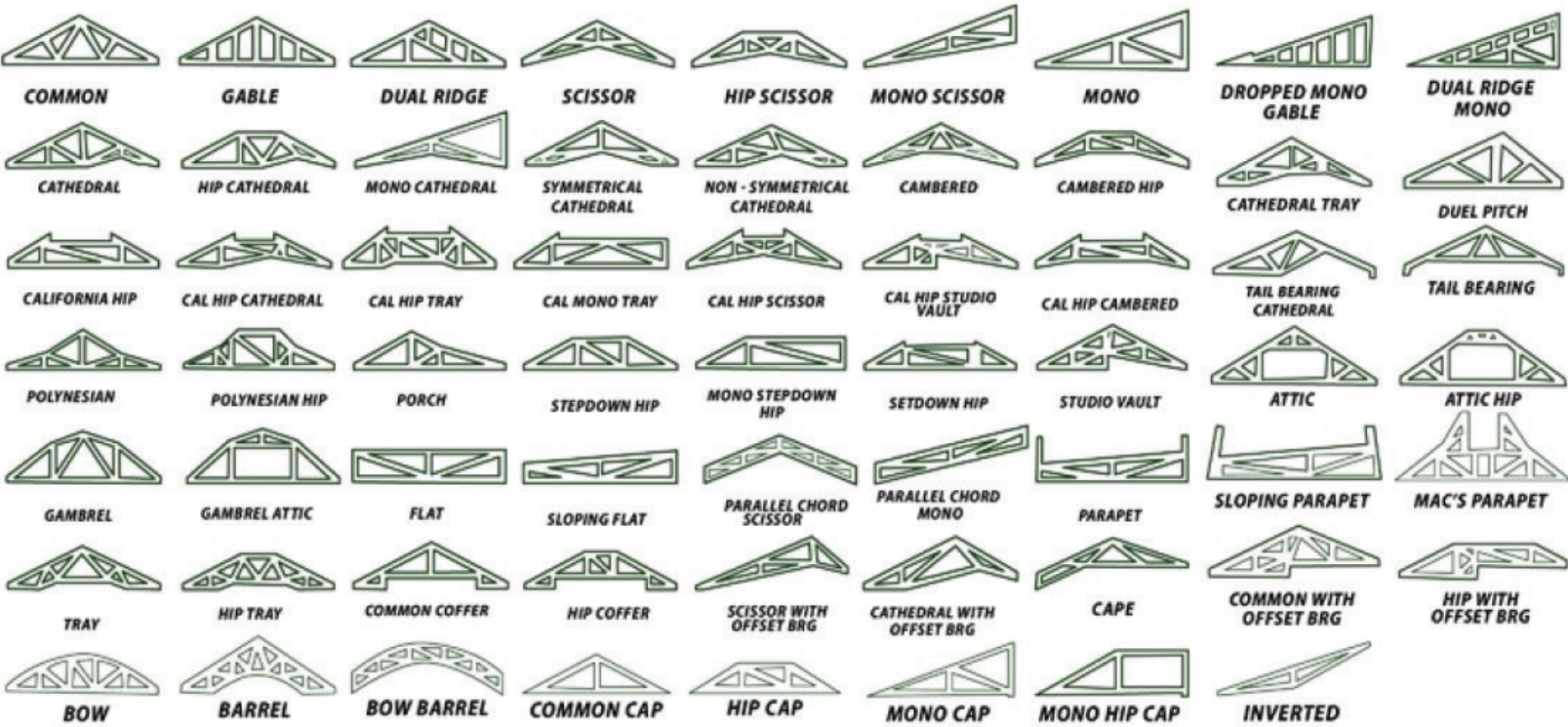
**CUSTOM FLOOR TRUSSES**  
*Delivered To Site*

Let our experienced technical designers assist you with your residential, commercial, and agricultural roof requirements.

## BASIC WEB CONFIGURATIONS



## TRUSS TYPES

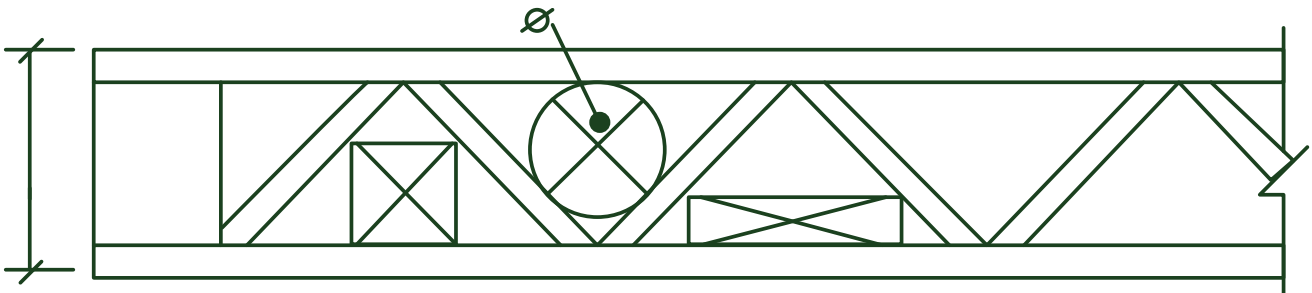


**53027 HIGHWAY 60  
ACHESON, AB  
T7XD 5A4**



# FLOOR TRUSS

## OPEN WEB FLOOR SYSTEM(WOOD)



Plumbing, electrical and HVAC systems can be installed around and through open web area of the floor trusses.



**We can also design and manufacture floors utilizing the MiTek Canada 'Posi-Strut.'**



- Open web design permits plumbing, heating and electrical to be installed quick and efficiently.
- Long spans allow the ability to create wide open spaces without a post dictating room layout.
- Floor system are designed by experienced competent and conscientious technical designers.